

YUMA HISTORIC PRESERVATION COMMISSION

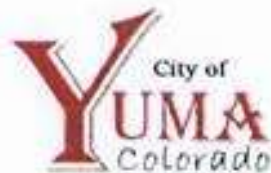
OUR PURPOSE

To promote the educational and cultural welfare of the citizens of Yuma through the identification, designation, and protection of those buildings, sites, districts, structures, and objects that reflect significant elements of the city's historic, architectural, archaeological, and cultural heritage.

We serve to benefit the Yuma community by preserving our past to promote our City's unique character, culture, and feel. We believe it is necessary to preserve the past as we build for the future. Through preservation, we can ensure that the City of Yuma remains differentiated and a great place for all residents to call home.

OUR MEMBERS

Chad Rayl, Jeanne Triplett, Lonnie Metzler, Deb Higgins, Aaron Prior, Teri Mekelburg and Dave Hoch



ABOUT YUMA, COLORADO

Established in 1887, Yuma is a small town located in the northeast corner of Colorado, roughly 40 miles from both the Nebraska and Kansas borders. Resting along Colorado's Eastern Plains, Yuma consists of a small agricultural community that is home to 3,285 people, making it the county's most populated city.

Our sources: *Action on the Plains*, *West Yuma County History Book*, *Yuma Album of Action on the Plains*, *Yuma Pioneer* and *Doris Mekelburg's It's Your Museum*, and *the Yuma Museum*.

YUMA HISTORIC PRESERVATION COMMISSION

Presents:
A Historic Walking Tour

Friday, September 3, 2021
5:30pm and 7:00 pm



1 JIM POWELL PHOTOGRAPHY

Address: 206 S Main Street

The town of Yuma was incorporated in 1887. There were 2 substantial brick buildings built by R. Von Horrum Schramm, one being the large 2 story brick building on the west side of Main Street which was then called Weld Avenue. This building was known as the Schramm Building.



late 1930's. The Yuma Pioneer Office; Asa Bishop's Red & White Grocery. 207 S. Main in Yuma.

2 YUMA PIONEER BUILDING

Address: 207 S Main Street

The Yuma Pioneer building installed a new front in keeping with steps of progress along Yuma's Main Street. The building was erected in 1889 by Raymon Von Horrum Schramm and brick manufactured at the kiln west of town was used in its construction.

3 OLD VINCENT HOUSE

Address: 320 S Ash Street

Once known as the yellow house on Ash Street this house was a (kit home) ordered from the Sears and Roebuck catalog. Between the years of 1908 and 1939 more than 70,000 kit homes were sold. These homes were quite popular during the Great Depression.

4 1ST YUMA HOSPITAL

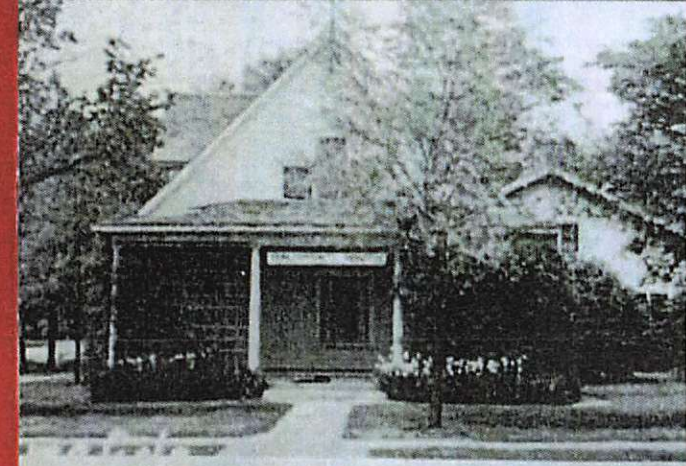
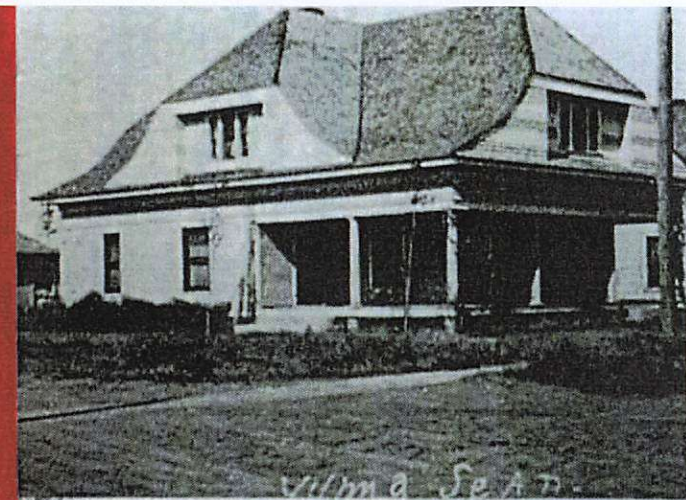
Address: 220 W 4 Ave

In April 1938 a group of local businessmen established the Yuma Community Hospital, which was located at 220 West 4th Avenue. This hospital served the community well for many years.

5 HOCH LUMBER YARD

Address: 100 S Main Street

In 1893, Henry Hoch brought the first load of lumber to Yuma from Sterling with a team of oxen and wagon. This was the beginning and establishment of what has always been known as the Hoch Lumber Company. "Home of the square Deal".



Yuma Community Hospital about 1947.

